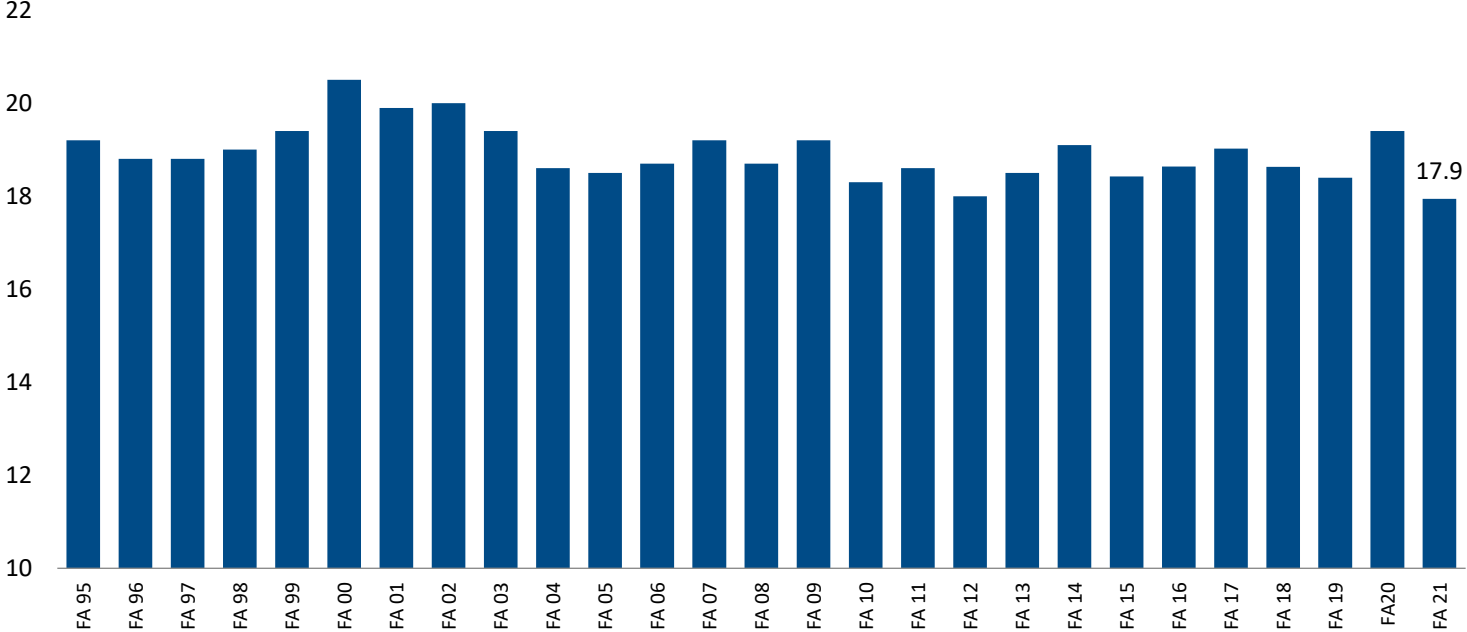
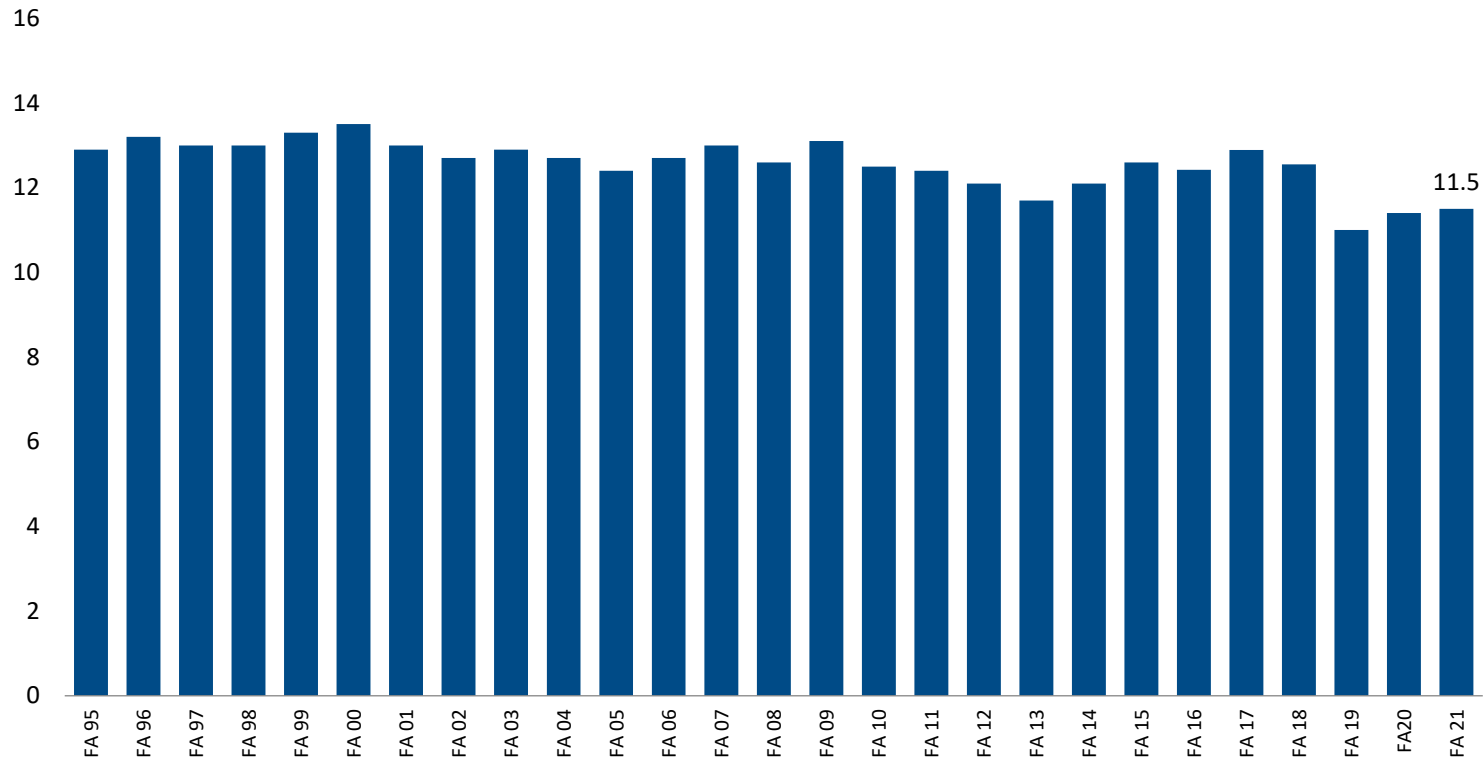


Saint Michael's College
Average Undergraduate Class Size



Saint Michael's College Undergraduate Student:Faculty Ratio



Undergraduate Degrees by Year

(as of 6/21/2022 12:13:17 PM)

		Yr Ended 6/30/2018		Yr Ended 6/30/2019		Yr Ended 6/30/2020		Yr Ended 6/30/2021		Yr Ended 6/30/2022	
		Count of Degrees Earned (IPEDS Completions)	% of Total Count	Count of Degrees Earned (IPEDS Completions)	% of Total Count	Count of Degrees Earned (IPEDS Completions)	% of Total Count	Count of Degrees Earned (IPEDS Completions)	% of Total Count	Count of Degrees Earned (IPEDS Completions)	% of Total Count
Accounting	AC	20	3.3%	19	3.7%	10	2.1%	12	3.0%	20	4.3%
American Studies	AM	7	1.2%	3	0.6%	7	1.4%	3	0.8%	2	0.4%
Art	AR	13	2.2%	8	1.6%	9	1.8%	1	0.3%		
Art and Design	AD							13	3.3%	10	2.1%
Art Education	AED	2	0.3%	1	0.2%	2	0.4%			1	0.2%
Biochemistry	BC	2	0.3%	10	1.9%	9	1.8%	6	1.5%	12	2.6%
Biology	BI	53	8.8%	49	9.5%	43	8.8%	41	10.4%	46	9.9%
Business Administration	BU	76	12.6%	96	18.6%	65	13.3%	45	11.4%	75	16.1%
Chemistry	CH	5	0.8%	7	1.4%	6	1.2%	3	0.8%	4	0.9%
Classics	CL					1	0.2%				
Computer Science	CS	9	1.5%	5	1.0%	12	2.5%	4	1.0%	7	1.5%
Criminology	CR							1	0.3%	6	1.3%
Data Science	DS					1	0.2%	5	1.3%	2	0.4%
Economics	EC	30	5.0%	21	4.1%	19	3.9%	15	3.8%	15	3.2%
Education Studies	EDST			4	0.8%	9	1.8%	7	1.8%	8	1.7%
Elementary Education	ED	27	4.5%	14	2.7%	23	4.7%	8	2.0%	13	2.8%
Engineering	EG	3	0.5%	6	1.2%	4	0.8%	2	0.5%	2	0.4%
English	EN	27	4.5%	24	4.7%	28	5.7%	13	3.3%	22	4.7%
Environmental Science	ES	13	2.2%	8	1.6%	7	1.4%	6	1.5%	19	4.1%
Environmental Studies	ENV	32	5.3%	25	4.8%	22	4.5%	24	6.1%	19	4.1%
French	FR	2	0.3%	7	1.4%	5	1.0%	2	0.5%		
Gender Studies	GS	2	0.3%					1	0.3%	4	0.9%
Health Science	HS							1	0.3%	10	2.1%
History	HI	21	3.5%	15	2.9%	8	1.6%	15	3.8%	16	3.4%
Information Systems	IS	7	1.2%			1	0.2%	3	0.8%	2	0.4%
International Relations	IR	11	1.8%	15	2.9%	3	0.6%	7	1.8%	10	2.1%
Latin	LA					2	0.4%				
Mathematics	MA	25	4.1%	9	1.7%	13	2.7%	11	2.8%	3	0.6%
Media Studies and Digital Arts	MJD	32	5.3%	25	4.8%	22	4.5%	19	4.8%	16	3.4%
Music	MU	2	0.3%	5	1.0%	9	1.8%	2	0.5%	3	0.6%
Neuroscience	NS	8	1.3%	10	1.9%	10	2.1%	11	2.8%	12	2.6%
Philosophy	PH	7	1.2%	7	1.4%	8	1.6%	7	1.8%	12	2.6%
Physics	PY	3	0.5%	3	0.6%	3	0.6%	4	1.0%		
Political Science	PO	32	5.3%	19	3.7%	21	4.3%	20	5.1%	13	2.8%
Pre-Pharmacy	PPH	4	0.7%	5	1.0%	4	0.8%	1	0.3%	2	0.4%
Psychology	PS	50	8.3%	49	9.5%	50	10.3%	37	9.4%	44	9.4%
Public Health B.A.	PBA							1	0.3%	3	0.6%
Public Health B.S.	PBS							2	0.5%	1	0.2%
Religious Studies	RS	4	0.7%	8	1.6%	5	1.0%	3	0.8%	5	1.1%
Secondary Education	SEC	14	2.3%	9	1.7%	13	2.7%	11	2.8%	6	1.3%
Self-Designed Major	SM	1	0.2%			1	0.2%				
Sociology and Anthropology	SO	31	5.1%	21	4.1%	16	3.3%	16	4.1%	14	3.0%
Spanish	SP	19	3.2%	3	0.6%	8	1.6%	7	1.8%	5	1.1%
Statistics	ST					1	0.2%	2	0.5%	1	0.2%
Theatre	TH	9	1.5%	6	1.2%	7	1.4%	2	0.5%	1	0.2%
Grand Total		603	100.0%	516	100.0%	487	100.0%	394	100.0%	466	100.0%

% of Total Count and Count of Degrees Earned (IPEDS Completions) broken down by irr IPEDS COMPL YR vs. irr Major Desc and Acad Majors.

Undergraduate Degrees by Year

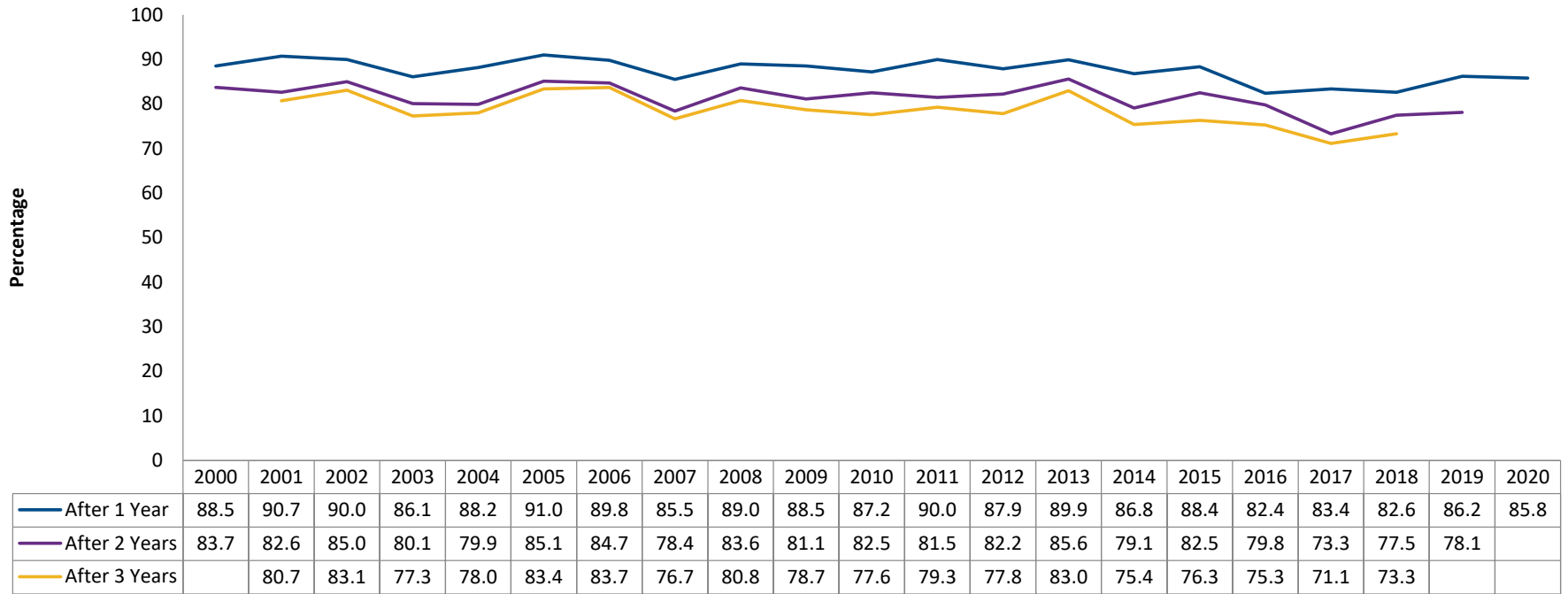
(% of total degrees issued; *multiple degrees per student*)

		Yr Ended 6/30/2018	Yr Ended 6/30/2019	Yr Ended 6/30/2020	Yr Ended 6/30/2021	Yr Ended 6/30/2022
Business Administration	BU	12.6%	18.6%	13.3%	11.4%	16.1%
Biology	BI	8.8%	9.5%	8.8%	10.4%	9.9%
Psychology	PS	8.3%	9.5%	10.3%	9.4%	9.4%
English	EN	4.5%	4.7%	5.7%	3.3%	4.7%
Accounting	AC	3.3%	3.7%	2.1%	3.0%	4.3%
Environmental Studies	ENV	5.3%	4.8%	4.5%	6.1%	4.1%
Environmental Science	ES	2.2%	1.6%	1.4%	1.5%	4.1%
Media Studies and Digital Arts	MJD	5.3%	4.8%	4.5%	4.8%	3.4%
History	HI	3.5%	2.9%	1.6%	3.8%	3.4%
Economics	EC	5.0%	4.1%	3.9%	3.8%	3.2%
Sociology and Anthropology	SO	5.1%	4.1%	3.3%	4.1%	3.0%
Political Science	PO	5.3%	3.7%	4.3%	5.1%	2.8%
Elementary Education	ED	4.5%	2.7%	4.7%	2.0%	2.8%
Philosophy	PH	1.2%	1.4%	1.6%	1.8%	2.6%
Neuroscience	NS	1.3%	1.9%	2.1%	2.8%	2.6%
Biochemistry	BC	0.3%	1.9%	1.8%	1.5%	2.6%
International Relations	IR	1.8%	2.9%	0.6%	1.8%	2.1%
Health Science	HS				0.3%	2.1%
Art and Design	AD				3.3%	2.1%
Education Studies	EDST		0.8%	1.8%	1.8%	1.7%
Computer Science	CS	1.5%	1.0%	2.5%	1.0%	1.5%
Secondary Education	SEC	2.3%	1.7%	2.7%	2.8%	1.3%
Criminology	CR				0.3%	1.3%
Spanish	SP	3.2%	0.6%	1.6%	1.8%	1.1%
Religious Studies	RS	0.7%	1.6%	1.0%	0.8%	1.1%
Gender Studies	GS	0.3%			0.3%	0.9%
Chemistry	CH	0.8%	1.4%	1.2%	0.8%	0.9%
Public Health B.A.	PBA				0.3%	0.6%
Music	MU	0.3%	1.0%	1.8%	0.5%	0.6%
Mathematics	MA	4.1%	1.7%	2.7%	2.8%	0.6%
Pre-Pharmacy	PPH	0.7%	1.0%	0.8%	0.3%	0.4%
Information Systems	IS	1.2%		0.2%	0.8%	0.4%
Engineering	EG	0.5%	1.2%	0.8%	0.5%	0.4%
Data Science	DS			0.2%	1.3%	0.4%
American Studies	AM	1.2%	0.6%	1.4%	0.8%	0.4%
Theatre	TH	1.5%	1.2%	1.4%	0.5%	0.2%
Statistics	ST			0.2%	0.5%	0.2%
Public Health B.S.	PBS				0.5%	0.2%
Art Education	AED	0.3%	0.2%	0.4%		0.2%
Art	AR	2.2%	1.6%	1.8%	0.3%	
Classics	CL			0.2%		
French	FR	0.3%	1.4%	1.0%	0.5%	
Latin	LA			0.4%		
Physics	PY	0.5%	0.6%	0.6%	1.0%	
Self-Designed Major	SM	0.2%		0.2%		

Undergraduate Completions & Completers by Year

	Count of Degrees Earned (IPEDS Completions)	Distinct count of Students (IPEDS Completers)
Yr Ended 6/30/2018	603	491
Yr Ended 6/30/2019	516	427
Yr Ended 6/30/2020	487	395
Yr Ended 6/30/2021	394	321
Yr Ended 6/30/2022	466	376

Saint Michael's College Undergraduate Retention Rates by Entering First-Year Class



Saint Michael's College Graduation Rates by Entering First-Year Class

